

## The Sensicast Wireless Advantage

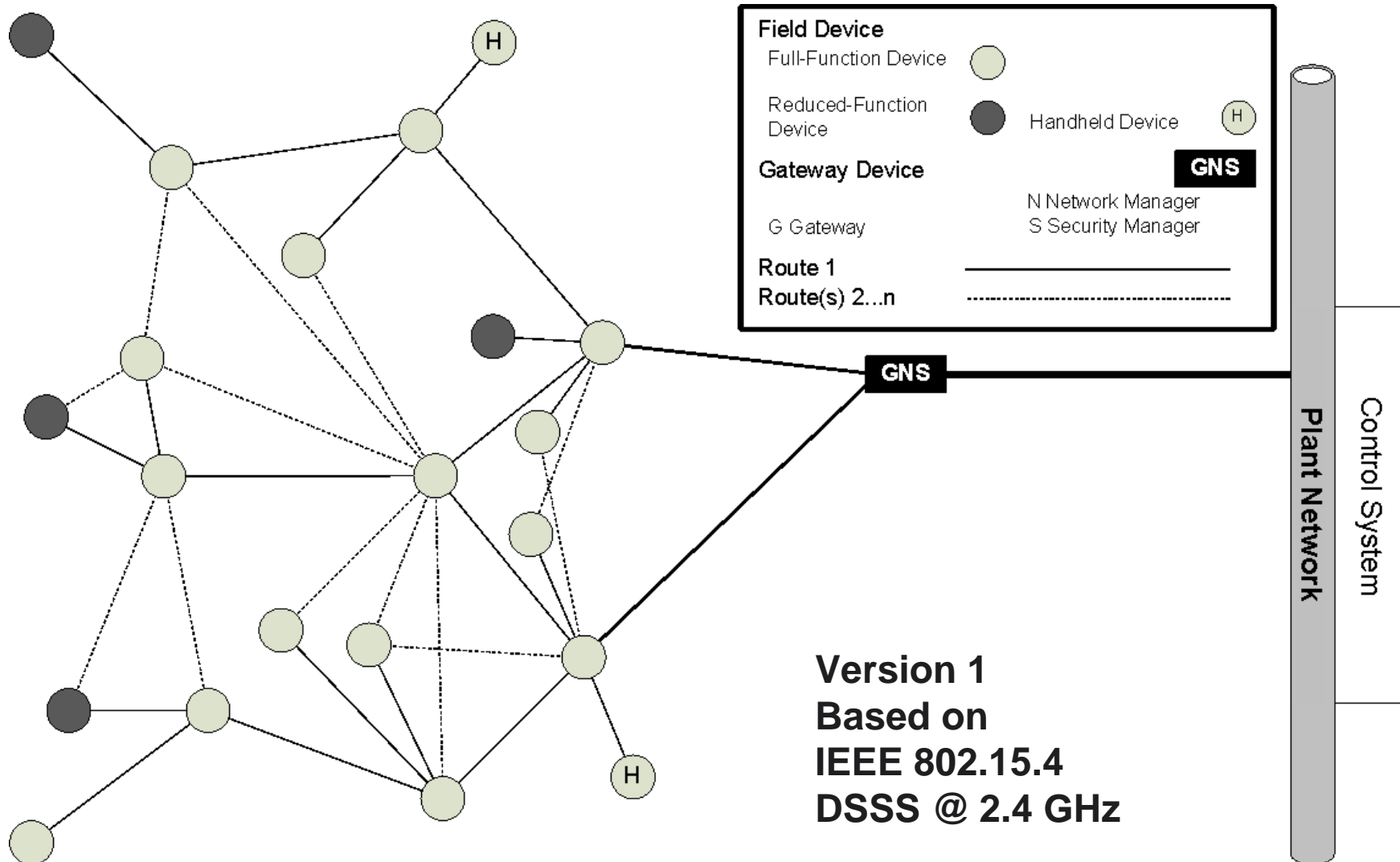


## Graphical Overview of ISA-SP100.11a Standard *“Wireless Mesh” Aspects*

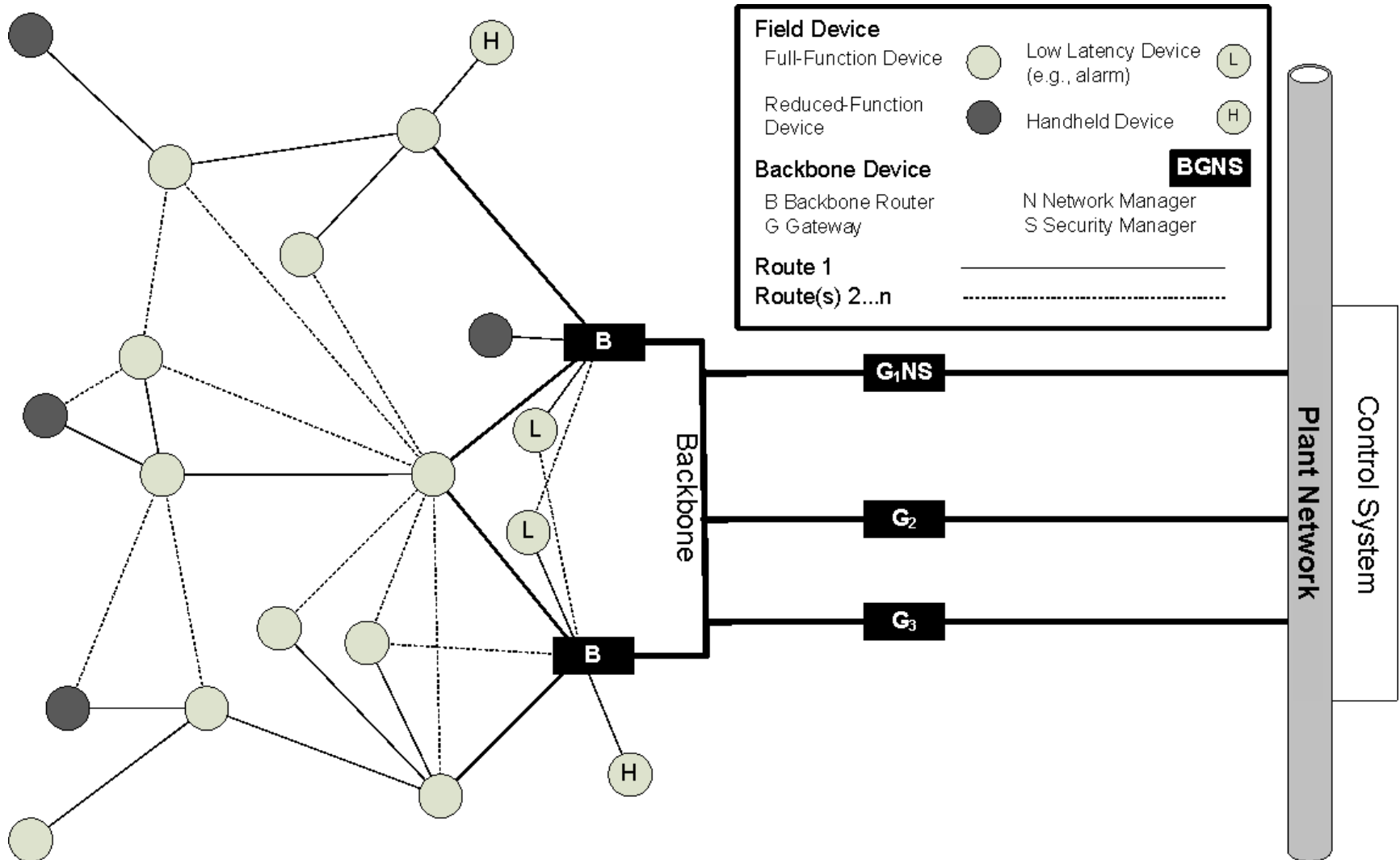
Jay Werb  
CTO  
Sensicast Systems  
[jwerb07@sensicast.com](mailto:jwerb07@sensicast.com)

DLL Technical Editor  
ISA-SP100.11a Standard

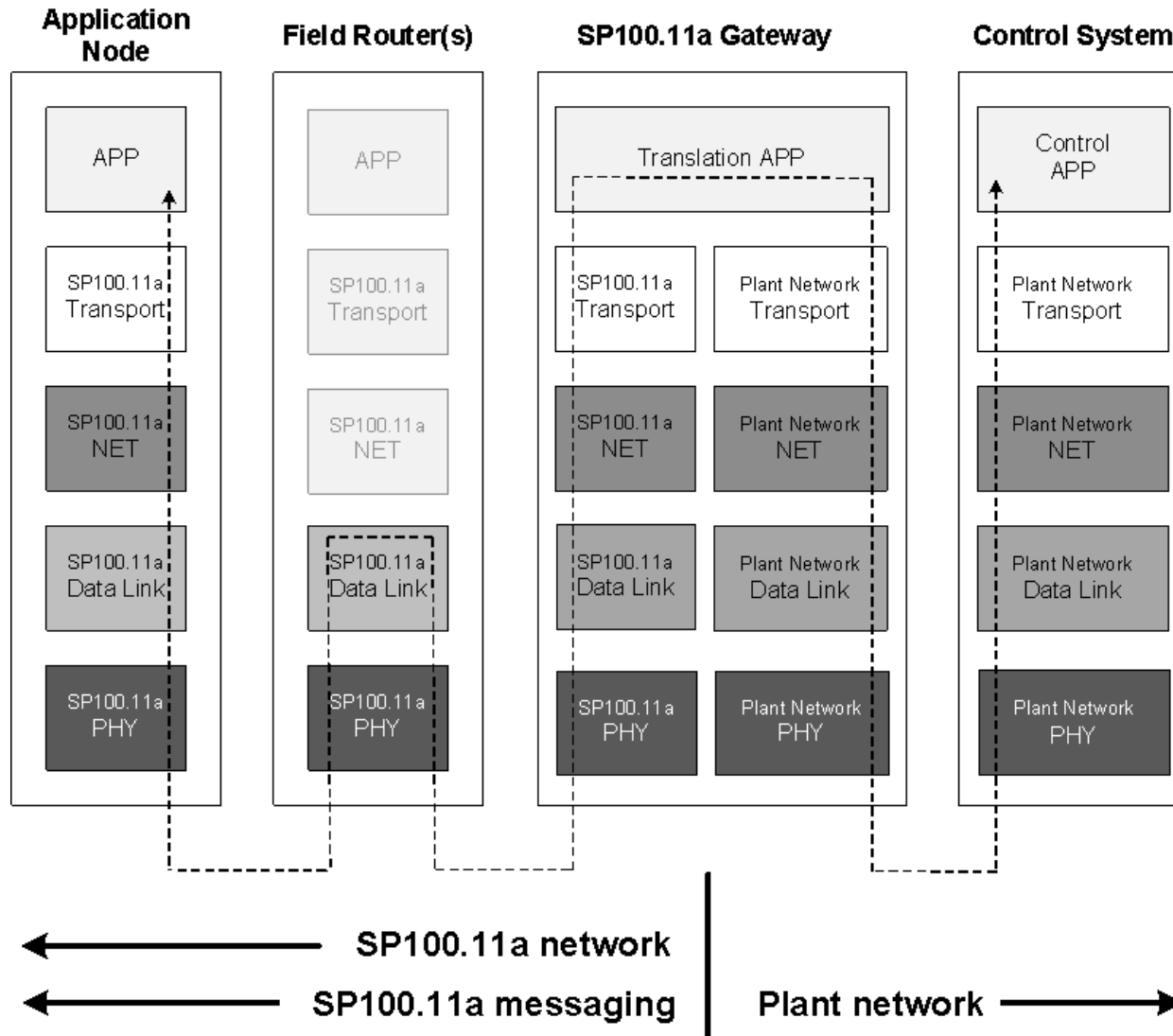
# Basic ISA-SP100.11a Field Network



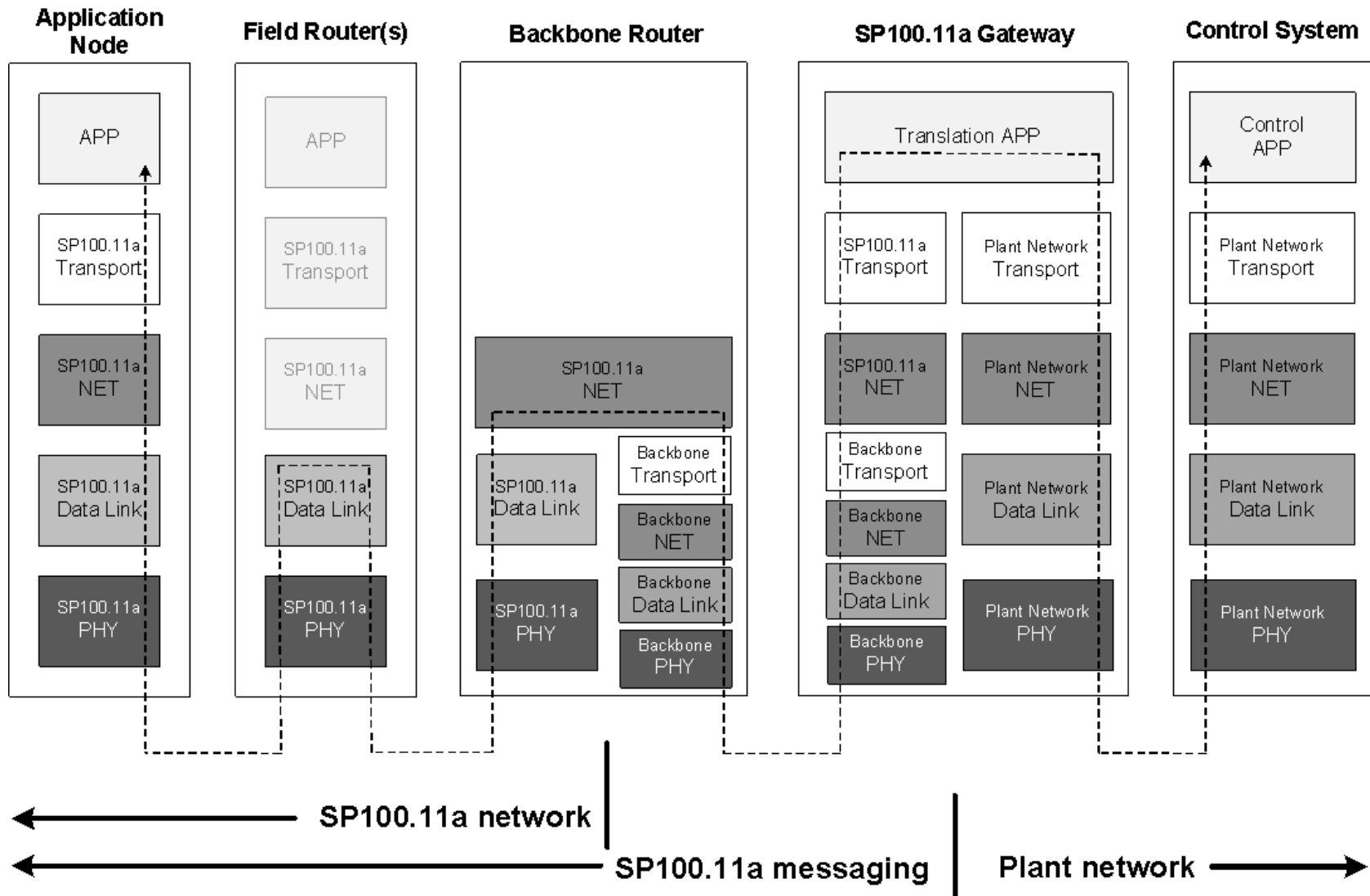
# SP100.11a Field Network with Backbone



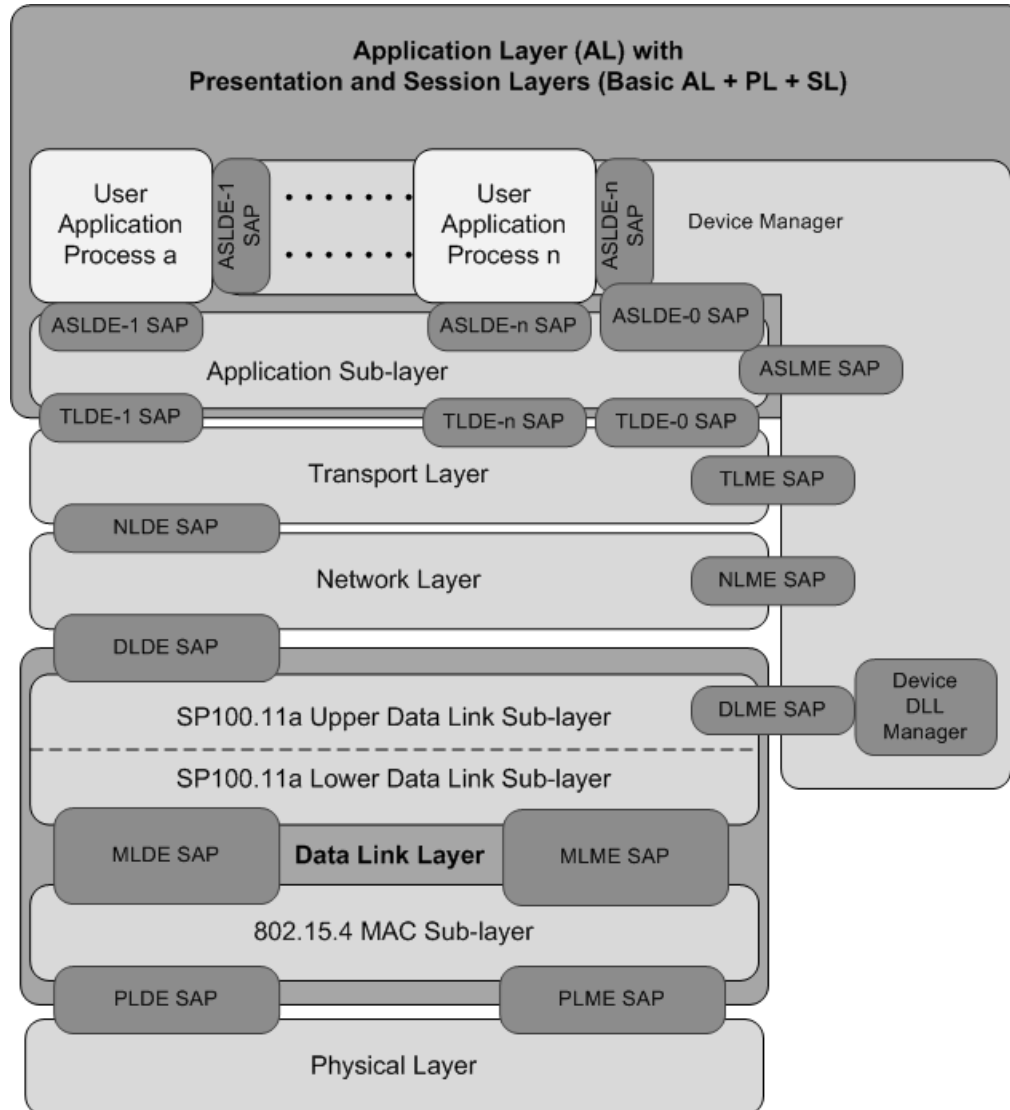
# Basic Data Flow



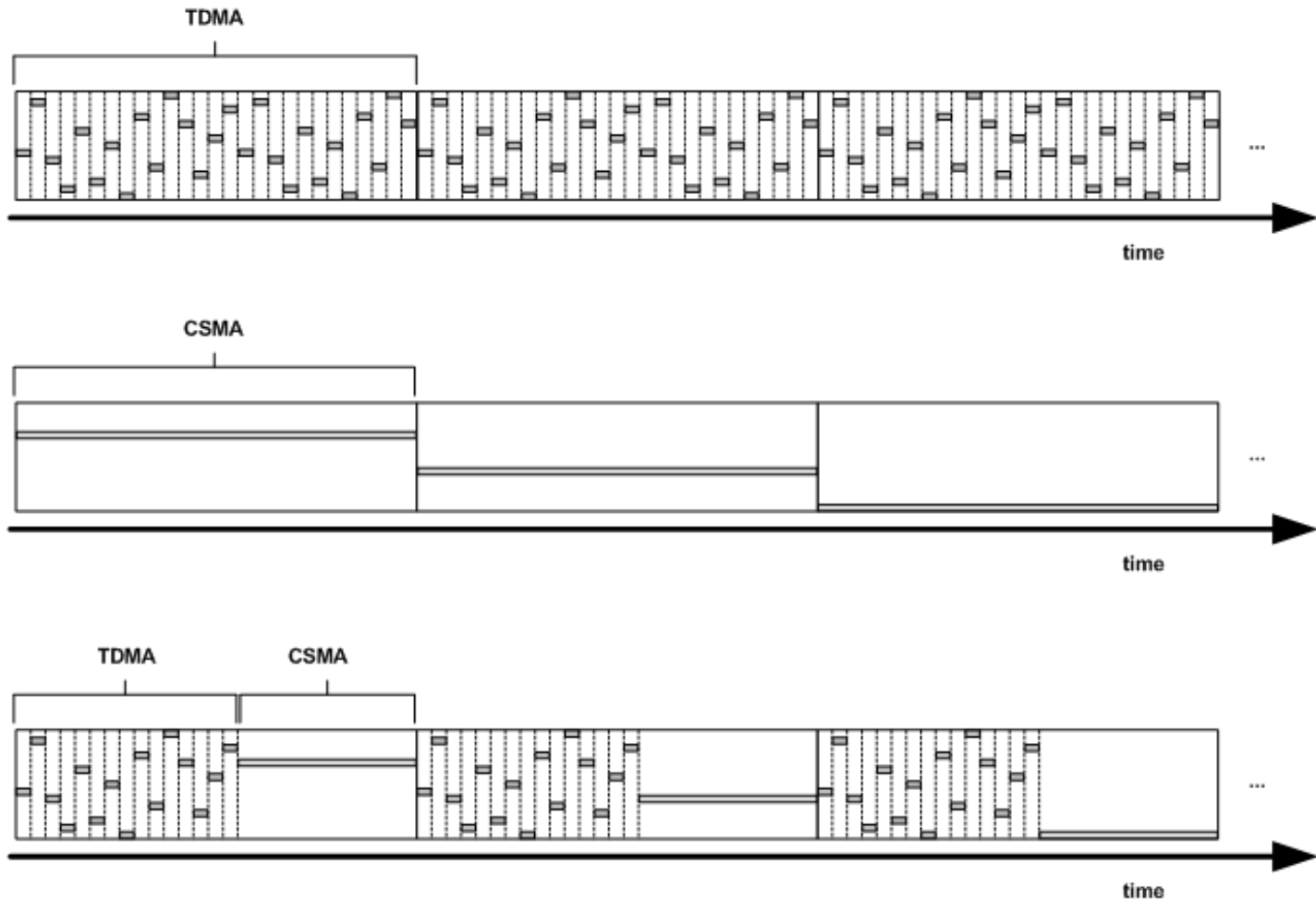
# Data Flow with Backbone



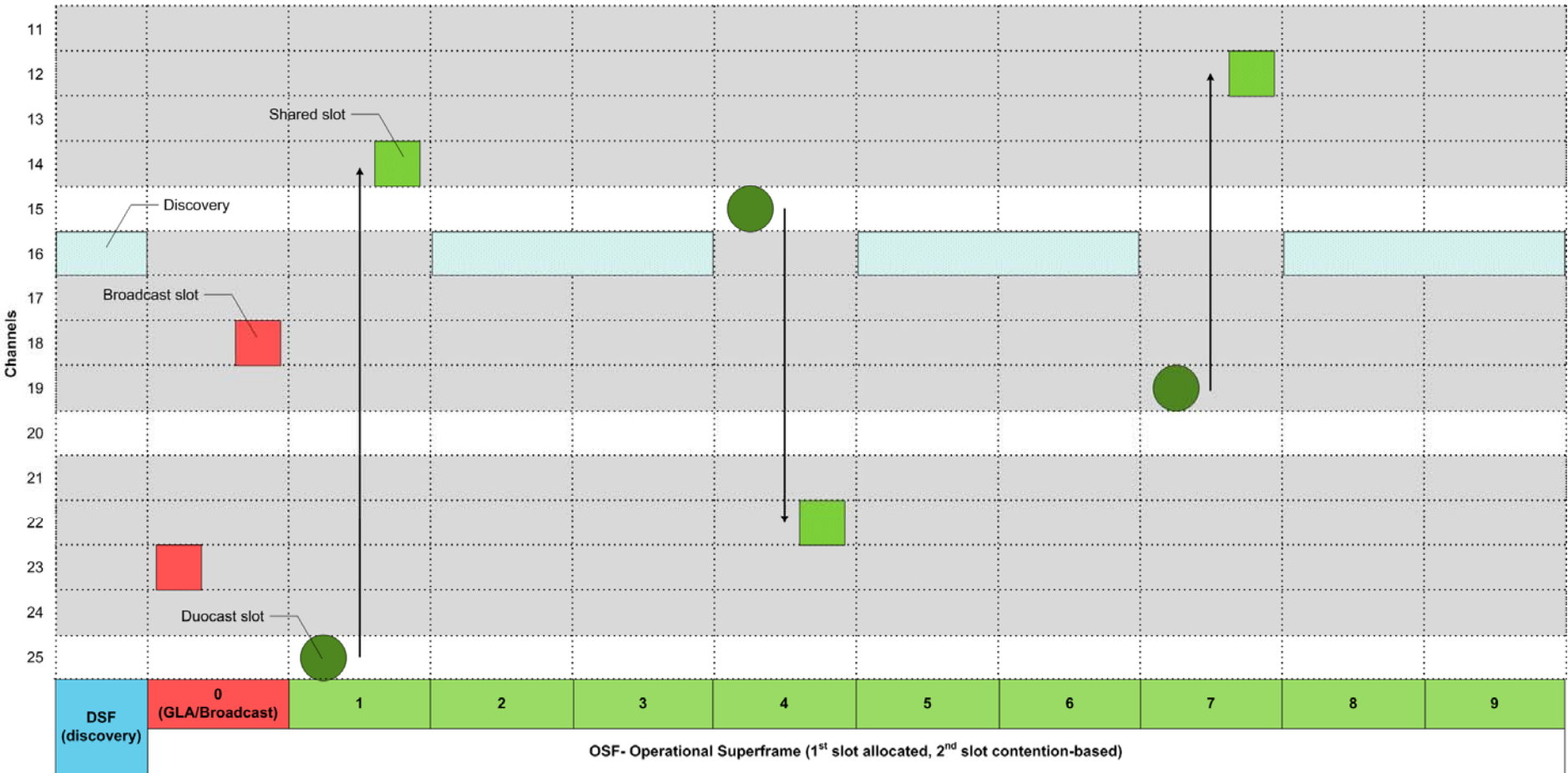
# Stack Structure



# Flexible DLL Platform Supports TDMA, CSMA, and TDMA/CSMA Hybrids



# Flexibility of the SP100.11a DLL An Example



← 250 ms cycle time →